



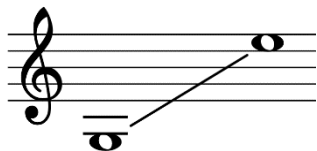
And/Or

for two or more singing violists

Jonathan Higgins

And/Or for two or more singing violists

Voice and Viola Range:



Performance instructions

All performers should play the same score starting at the same time.

Due to the indeterminate nature of the piece it is not expected that performers will remain in unison throughout.

Tempo is indicated by the timings in minutes and seconds on the top right of each staff. These timings are guidelines only and do not need to be strictly adhered to.

Rhythm is indicated by both the distance between each note and the note head used. Solid note heads (● ✕) should have a short duration and hollow note heads (○ ⊗) a long duration.

Cross note heads (✕ ⊗) indicate that an unpitched sound should be made. What sound is made on these is open to the performer.

When singing pitched material, the vocal sound to use is indicated beneath the score (Ah__, Oh__, Hum__). This sound should be used for all pitched vocalisations after this indication until a different sound is indicated.

Low resolution sections of score should be interpreted as best as possible. You should not pre-decide and rehearse what you are going to play, each performance should be different.

Boxed text across the top of the score indicates whether that section is for voice and/or viola.

And: voice and viola

Or: choose between voice or viola

And/Or: you may choose to use both voice and viola or only one

Once you decide which instrument to use you should keep with this instrument until the next boxed text.

Articulations (staccato and tenuto) can be articulated using extended techniques should the performer choose to do so.

And/Or

Jonathan Higgins

0'00" And

pp Ah_ # *sfp* *mf* Oh_ *

0'30" Or And Or

p Hum_ *mf* Ah_ *

1'00" *pp* And *sfz* And/Or *mp*

Ah_

1'30" Or *mf* And/Or

Ah_ Oh_

2'00" *p* And *mf* And/Or *pp*

Ah_ Oh_

2'30" And
f And/Or
mf

Ah_

Detailed description: This musical staff begins at 2'30". It features a treble clef and a key signature of one sharp (F#). The melody starts with a quarter note G4, followed by quarter notes A4 and B4, and a dotted quarter note C5 marked with an asterisk (*). The staff then continues with a series of chords and melodic lines, including a half note D5 marked with a circled cross (⊗). A dynamic marking of *f* is placed above the first measure, and *mf* is placed above the second measure. A tempo marking And is above the first measure, and And/Or is above the second measure. The vocal line is labeled "Ah_" below the staff.

3'00" Or
mp And/Or
pp *mf*

Oh_

Detailed description: This musical staff begins at 3'00". It features a treble clef and a key signature of one sharp (F#). The melody starts with a quarter note G4, followed by a quarter note A4 marked with a sharp (#), and a dotted quarter note B4. The staff then continues with a series of chords and melodic lines, including a half note C5 marked with a circled cross (⊗). A dynamic marking of *mp* is placed above the first measure, *pp* is placed above the second measure, and *mf* is placed above the third measure. A tempo marking Or is above the first measure, and And/Or is above the second measure. The vocal line is labeled "Oh_" below the staff.

3'30" Or
p

Hum_

Detailed description: This musical staff begins at 3'30". It features a treble clef and a key signature of one sharp (F#). The melody starts with a quarter note G4, followed by a quarter note A4, and a dotted quarter note B4. The staff then continues with a series of chords and melodic lines, including a half note C5 marked with a circled cross (⊗). A dynamic marking of *p* is placed above the first measure. A tempo marking Or is above the first measure. The vocal line is labeled "Hum_" below the staff.

4'00" And
mp *pp* And/Or
mp

Oh_ Ah_

Detailed description: This musical staff begins at 4'00". It features a treble clef and a key signature of one sharp (F#). The melody starts with a quarter note G4, followed by a quarter note A4, and a dotted quarter note B4. The staff then continues with a series of chords and melodic lines, including a half note C5 marked with a circled cross (⊗). A dynamic marking of *mp* is placed above the first measure, *pp* is placed above the second measure, and *mp* is placed above the third measure. A tempo marking And is above the first measure, and And/Or is above the third measure. The vocal line is labeled "Oh_" below the first measure and "Ah_" below the third measure.

4'30"

Hum_ Ah_

Detailed description: This musical staff begins at 4'30". It features a treble clef and a key signature of one sharp (F#). The melody starts with a quarter note G4, followed by a quarter note A4, and a dotted quarter note B4. The staff then continues with a series of chords and melodic lines, including a half note C5 marked with a circled cross (⊗). A dynamic marking of *p* is placed above the second measure. A tempo marking Or is above the third measure. The vocal line is labeled "Hum_" below the first measure and "Ah_" below the second measure.

